

# Premier & Executive Armor Installation Instructions

## REQUIRED TOOLS

- Heavy Duty caulking gun
- 1 roll of paper towels
- 1 pint of rubbing alcohol
- 1 pint of paint surface prep such as Pro Bond or Cleaning Solvents.
- Grease marking pencil
- Tape measure
- Chalk line
- Laminate roller

## INSTALLATION STEPS

1. **Verify Fit:** Lay each stainless steel panel next to the appropriate body panel. Parts are identified by a letter/number combination printed on each label. P2 indicates the panel is for the passenger side, second one from the front. The seventh panel on the driver's side is labeled D7.
2. **Prepare the Coach Body:** The surface of the vehicle must be free of any solvents, waxes, dirt, oil, road tar, and applied paint sealer treatments. A solvent wash which removes all contaminants should be used prior to installing any adhesive products. Automotive degreasers such as MEK (methyl ethyl ketone) can be used. After cleaning the surface of the vehicle with the degreaser, the entire surface must then be wiped down with isopropyl alcohol.



3. If the painted surface is still too slick, then scuff the application area with a 3M Scotch-brite pad.
4. Re-clean the surface with rubbing alcohol.
5. The recommended metal surface temperature of the vehicle should be at least 75°F/24°C for proper installation.
6. **Establish Placement:** On the driver's side storage doors, place a short section of Premier Armor on the body directly behind the front wheel. See Figure 1. Using the grease pencil, mark on the coach the top edge of the stainless steel.

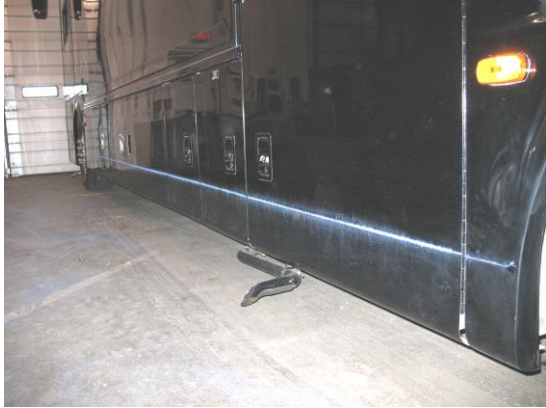


Figure 1

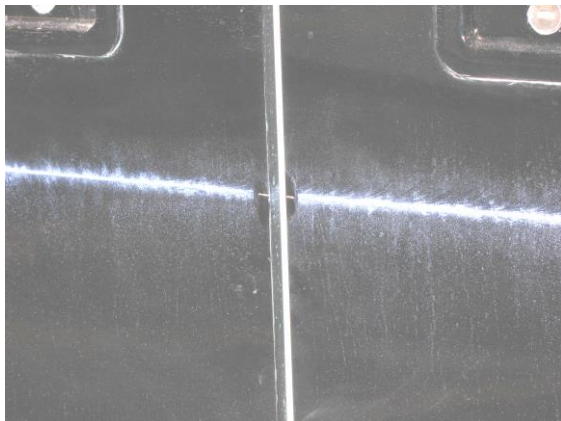
7. Using the same short section of Premier Armor, place the stainless against the body panel located directly in front of the rear wheel. Using the grease pencil, mark on the coach the top edge of the stainless steel.
8. Using a chalk line, mark on the coach the straight line connecting these two panels. Ideally, all of the body panels are in alignment and no adjustments are needed. Some coaches will require that this line be lowered to accommodate the lowest fitting door. Adjust the application line created by the chalk accordingly.
9. Using the grease pencil, make 1/2" long marks along the left and right edge of each door at the center of the chalk line. Once completed, wipe the chalk off with a

# Premier & Executive Armor Installation Instructions

damp rag. Be sure to leave behind no residue.



**Figure 2 Chalk Line on coach**



**Figure 3 Grease Pencil Marks**

- 10. Prepare Premier Armor:** Wipe the backside of the stainless steel panels with alcohol. This re-activates the black primer that has been factory applied.
- 11. Apply Adhesive:** Begin with the first panel behind the driver's side front wheel. Apply small beads of Sika adhesive every 6-8 inches. The size of the beads should be about half the size of a grape. See Figure.



**Figure 4**

- 12. Remove the protective tape backing.** Do not touch the exposed adhesive with your fingers as the excess skin oil will adversely affect adhesion.
- 13. With assistance, position the Premier Armor panel against the coach.** Align the top edge with the grease pencil marks. Adjust left and right for best fit.
- 14. Using a laminate roller, apply pressure to the stainless steel panel** so that the tape is securely adhered to the coach and that the beads are flattened. Clamps may be necessary to use on some panels to allow the tape and glue to properly adhere.



**Figure 5 Laminate Roller**

## Premier & Executive Armor Installation Instructions

15. Repeat this process for the rest of the panels on one side working from front to rear. Be sure to roll the panels flat as you go. The panels should not vary by more than 1/16" vertically. See Figure below.



16. If the adhesive squeezes out from between the stainless panels and the coach body, wipe it off with alcohol and a paper towel. This should be done while the adhesive is still soft.
17. When one side is completely bonded to the coach, then repeat the process for the other side.

18. **Sealing the Armor Panels:** Some panels will have a gap between the end of the stainless and the door or coach body. For a professional appearance, we recommend sealing the edge.
19. Apply a thin bead of Sika adhesive using the small tip nozzle to the gaps between the panel edges and the stainless pieces. This is especially important around the wheel wells. Wipe smooth and remove excess with alcohol and a paper towel while the adhesive is still soft.

### CLEANING INSTRUCTIONS

1. Clean the Premier Armor with warm soapy water, solvents, or ammonia. Do not use cleaners with abrasive materials.
2. To prolong the beauty and ease of cleaning, we suggest waxing the stainless. This helps to reduce the water spots as well.
3. Keep product free of salt and other ice deterrents to ensure a long-lasting finish.



Figure 6

# Premier & Executive Armor Installation Instructions

## HOW TO CONTACT US

If you need to contact Summit Products, Inc, then please call 800-329-2958 or write to:

**Summit Products, Inc.**  
6750 NE 41<sup>ST</sup> Avenue  
Altoona, IA 50009